



The

LANDING

WHITBY HARBOUR



The
LANDING
WHITBY HARBOUR

Imagine sunsets over the lake. The soothing rhythm of the water. The cries of gulls skimming across the pristine shore. And the charming beauty of boutique shops, cafes and parks all within a few minutes from The Landing. Developed by Cartera, with architectural design by IBI Group, The Landing blurs the lines between imagination and possibility.





SET YOUR COMPASS TO WHITBY HARBOUR

Welcome to the Town of Whitby's finest lakeside neighbourhood and discover its newest condominium community – The Landing. Just a three-minute stroll to the Whitby GO Station, and minutes from walking trails, schools, shops, restaurants and more, The Landing offers the best of condominium living.

The Landing – a commuter's paradise, and the perfect place to land!

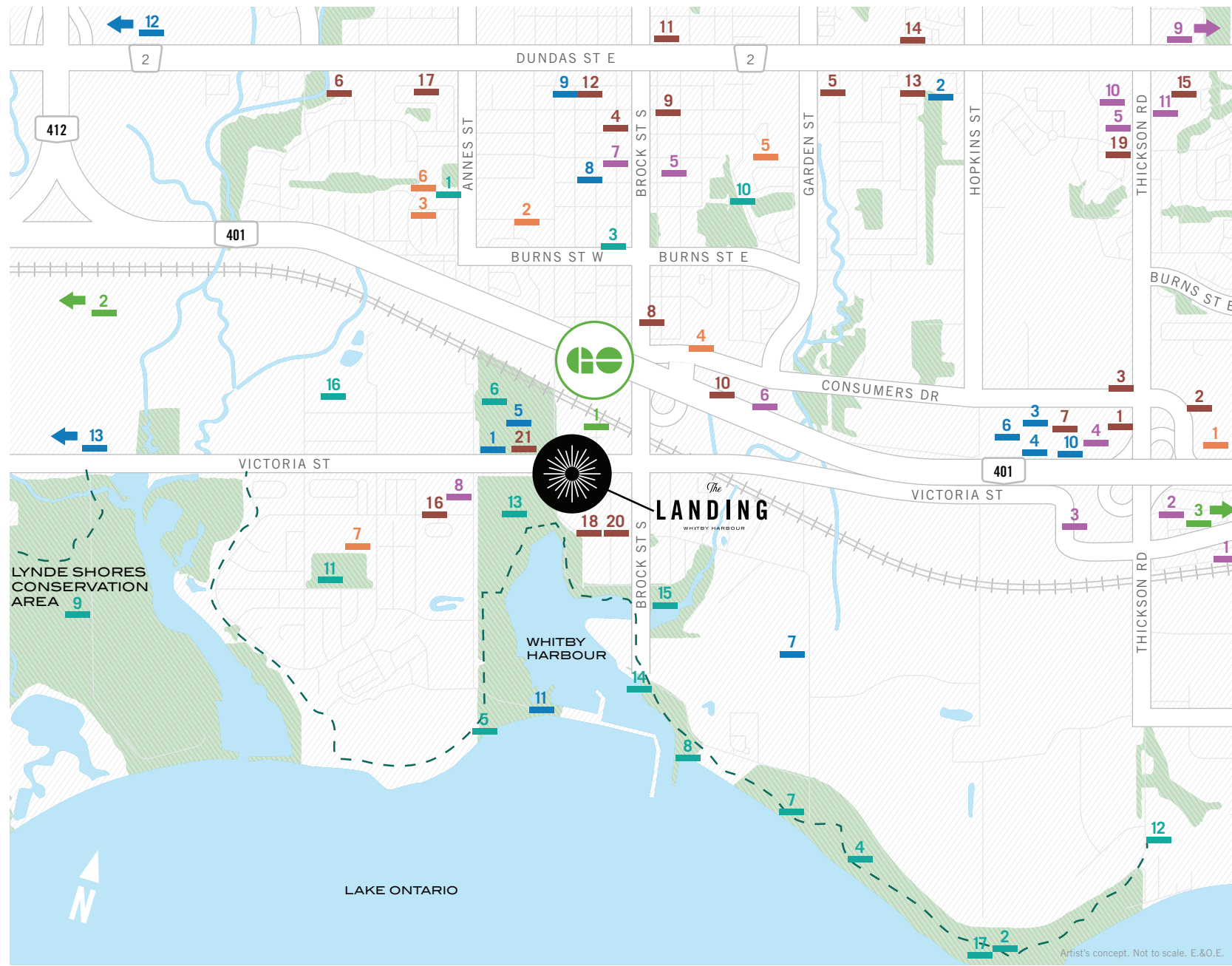




Rendering and landscape is artist's concept. E.&O.E.

CONTEMPORARY ARCHITECTURE

With a modern streetscape and welcoming Charles Street entrance, The Landing is seamlessly connected to the neighbourhood.



- DINING**
1. Bâton Rouge Steakhouse & Bar
 2. Bistro '67
 3. Big Boy's Burgers
 4. Brock Street Brewing Company
Nick's Grill
The Tap & Tankard
 5. Brothers Ristorante
 6. Butchie's
 7. Denny's
Jack Astor's Bar & Grill
Milestones Grill & Bar
Montana's BBQ & Bar
Demetres Cafe
 8. Greek Tycoon
 9. Hops House Bar & Grill
 10. Kelseys
Sunset Grill
Swiss Chalet
 11. Nice-Bistro Restaurant
Oishi Maki
 12. Captain George's Fish & Chips
The Downpatrick Pub
Antonio's Italian Deli
Navona Pizzeria
 13. Los Cabos Cantina & Grill
Garry's Mr. Jerk Chicken

14. Sham Rock's Pub
15. Asia Express
16. The Royal Oak
Tim Hortons
17. The Villa
Pete's Big Bite
Tim Hortons
18. Town Brewery
19. Melanie Pringles
Starbucks
20. Lake Grill
21. Boston Pizza

- SCHOOLS**
1. Durham College
 2. Henry Street High School
 3. Saint Marguerite d'Youville Catholic School
Sir William Stephenson Public School
 4. Trafalgar Castle School (Private All Girls)
 5. West Lynde Public School
 6. Whitby Shores Public School

- PARKS**
1. Annes Street Park
 2. Centennial Grove
 3. Centennial Park
 4. Gordon Richards Park
 5. Iroquois Beach
 6. Iroquois Park
 7. Kiwanis
Heydenschore Park
 8. Lake Park
 9. Lynde Shores Conservation Area
 10. Peel Park
 11. Portage Park
 12. Thickson Woods
 13. Victoria Fields
 14. Whitby Harbour
 15. Windsor Bay Park
 16. Whitby Off-leash Dog Park South
 17. Ronald C. Deeth Park

WATERFRONT TRAIL

- TRANSIT**
1. Whitby GO Station
 2. Ajax GO Station
 3. Oshawa GO/VIA Station
- RECREATION/ ENTERTAINMENT**
1. Abilities Centre
 2. Durham Escape Rooms
 3. GoodLife Fitness
 4. iFly Whitby
 5. Iroquios Park Sports Centre
 6. Landmark Cinemas
 7. Sky Zone Trampoline Park
 8. Whitby Courthouse Theatre
 9. Whitby Public Library
 10. Whitby Putting Edge
 11. Whitby Yacht Club
 12. OLG Slots at Ajax Downs
 13. FUTURE Durham Live

- SHOPPING/GROCERY**
1. Bed Bath & Beyond
Golf Town
Best Buy
 2. Home Depot
PetSmart
IKEA (pick-up outlet)
JYSK
 3. Leon's
 4. The Brick
Pro Hockey Life
 5. LCBO
 6. Canadian Tire
 7. FreshCo
 8. Metro
LCBO
 9. Oshawa Centre
 10. Metro
Toys R Us
 11. Whitby Mall



WHITBY HAS IT ALL!

Whitby has a rich past and exciting plans for the future. Situated on the shores of Lake Ontario, just east of Toronto, Whitby offers an eclectic mix of picturesque neighbourhoods with stately homes, storied buildings, unique streets, two downtowns (Whitby & Brooklin) and charming cultural offerings.

From shopping, dining, recreation and entertainment, there is something for everyone, all year round.





125
PARKS

950
ACRES OF
PARKLAND

1000
ACRES OF OPEN
SPACES AND BEACHES

60KMS
OF TRAILS

420
SLIP MARINA



**WHERE LIFE IS INFUSED
WITH CHARM**

Framed by the beauty of Lake Ontario, Whitby combines charm and charisma with all the necessities for active, wholesome living. Sandy beaches, an endless expanse of blue water and fresh breezes fan lakeside parks, the pier and Whitby Harbour.

Enjoy a slower pace of life, with less traffic and a warm and friendly community.



WHITBY LIBRARY
Whitby Public Library offers an extensive array of collections, programs, and resources. It has been in operation for 107 years.

ARTS, CULTURE & EDUCATION

URBAN SOPHISTICATION WITH SMALL TOWN CHARM

Whitby combines the best of small town atmosphere with the sophistication and conveniences of a large urban centre. Arts and culture contribute significantly to the quality of life in Whitby promoting health, family, community, learning, and creativity.

From art exhibitions at the Station Gallery to local theatrical performances at the Whitby Courthouse Theatre, the community is committed to culture, integrating art, music, theatre and activities for all ages.

SCHOOL'S IN SESSION

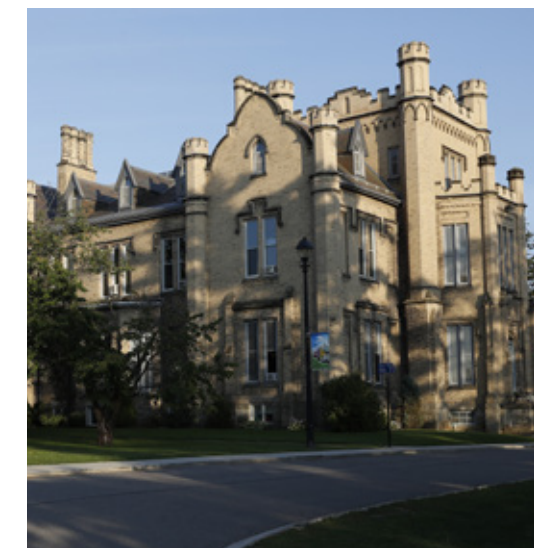
Whitby takes education seriously and offers excellent options for children from pre-school to Grade 12 to College. You can choose public or separate elementary and secondary schools as well as French immersion options. There are also great choices for pre-schools, private schools and post-secondary schools including Durham College and University of Ontario Institute of Technology (UOIT).



EVENTS
Whitby is home to over 200 events every year. The many festivals, concerts, parades, races, walks, runs and carnivals enrich the spirit and vibrancy of the community.



THE CENTENNIAL BUILDING
Considered to be one of Whitby's most significant historical and architectural landmarks, built in 1852 and now home to Whitby Courthouse Theatre, local archives and banquet facility.



TRAFALGAR CASTLE SCHOOL
This prestigious girls' school was founded in 1874 and is regarded as one of the best all ages private schools in Ontario.



THE WHITBY LIGHTHOUSE
A beacon of the Whitby Marina, the lighthouse is a beloved landmark.



STATION GALLERY
Station Gallery is a public art gallery offering art classes for all ages, engaging exhibitions, family art days and fun community events. It's open seven days a week and it's always free to visit.



WALK

3 MIN TO WHITBY GO STATION

5 MIN TO WHITBY'S WATERFRONT TRAIL

6 MIN TO IROQUOIS PARK SPORTS COMPLEX



DRIVE

8 MIN TO OSHAWA CENTRE

12 MIN TO FUTURE DURHAM LIVE ENTERTAINMENT COMPLEX

20 MIN TO U OF T SCARBOROUGH CAMPUS

35 MIN TO DOWNTOWN TORONTO



GO TRAIN

40 MIN RIDE TO UNION STATION

COMPARED TO:

48 MIN FROM BRAMPTON

51 MIN FROM BURLINGTON

57 MIN FROM MARKHAM

58 MIN FROM NEWMARKET

87 MIN FROM BARRIE



EASY ACCESS

TO 401, 412 & 407

**CATCH THE GO, HOP
ON THE 401 OR 412,
JUST MINUTES FROM
THE LANDING.**

Connect to almost anywhere in the GTA from Whitby's modern, efficient GO service. Ride to Downtown Toronto in just over half an hour! Major highways are just outside your door at The Landing with easy access to the 401 at Brock Street, and the 412 (407 connection) is just seconds away. Whether it's commuting to work, school or getting out of the city, Whitby has the connections to get you there fast.



WINTER FUN

IN WHITBY

3 COMMUNITY CENTRES

10 INDOOR ICE RINKS

15 MINUTES TO SKI HILLS

5 SKI RESORTS NEARBY

DOZENS OF CROSS COUNTRY SKI TRAILS

NUMEROUS OUTDOOR SKATING LOCATIONS



SUMMER FUN

IN WHITBY

11 TENNIS COURTS

28 BASKETBALL COURTS

2 YEAR-ROUND DEEP WATER SWIMMING POOLS

125 PARKS

OVER 60 KM OF TRAILS

OVER 15 GOLF COURSES NEARBY



200+
ANNUAL EVENTS

OVER 200
RESTAURANTS & BARS

6 MIN
TO OLG SLOTS AT AJAX DOWNS

8 MIN
TO NORDIK SPA

12 MIN
TO FUTURE DURHAM LIVE
ENTERTAINMENT COMPLEX



WHITBY IS A FOUR-SEASON FUN-FEST!

Whitby is all about fun, family and fitness. With exceptional facilities for winter and summer activities, you'll never run out of things to do.

FARMERS' MARKET

Features local produce, baked goods and handcrafted items. Typically open every Wednesday from May 23 to October 30.

CANADA DAY

Enjoy kids zone, adventure zone, arts trail, farmers' market, community and food vendors, water activities and music, capped off with spectacular fireworks.

BROOKLIN SPRING FAIR

Produced by The Brooklin Agricultural Society, this annual event showcases homecrafts, agricultural education, events and attractions.

RIBFEST

This annual summer festival by the Rotary Club features award-winning ribs, outstanding entertainment, an exciting midway and free admission.

OPEN STREETS

Formerly "Heritage Days", Whitby Open Streets is a unique community-focused event in downtown Whitby. The streets are closed to cars and open to pedestrians and cyclists and often feature entertainment and pop-up activations.





TOP LAKESIDE ACTIVITIES

PADDLE BOARDING

WIND SURFING

BOATING

KAYAKING

SAILING

FISHING

COMMUNITY EVENTS

WATERFRONT TRAILS FOR BIKING, HIKING AND RUNNING

PICNICS AT KIWANIS HEYDENSORE PARK

BOATING AND SAILING CAMPS AT THE MARINA

SANDY BEACH AT IROQUOIS BEACH PARK



CONNECT TO AN ACTIVE WATERFRONT

With Whitby's 420-slip marina just a short walk away, residents at The Landing can enjoy all of the benefits of lakeside living.

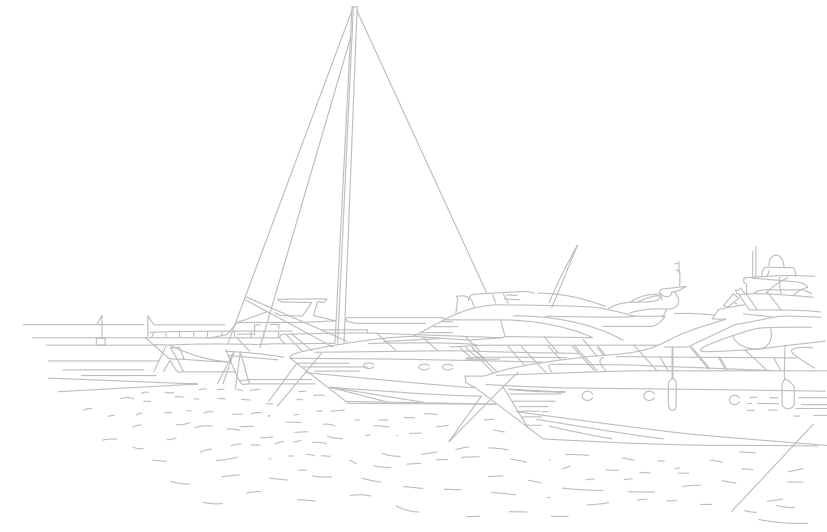
Whitby Marina is one of just 12 Ontario marinas designated with 5 Diamond ranking.



Rendering and landscape is artist's concept. E.&O.E.



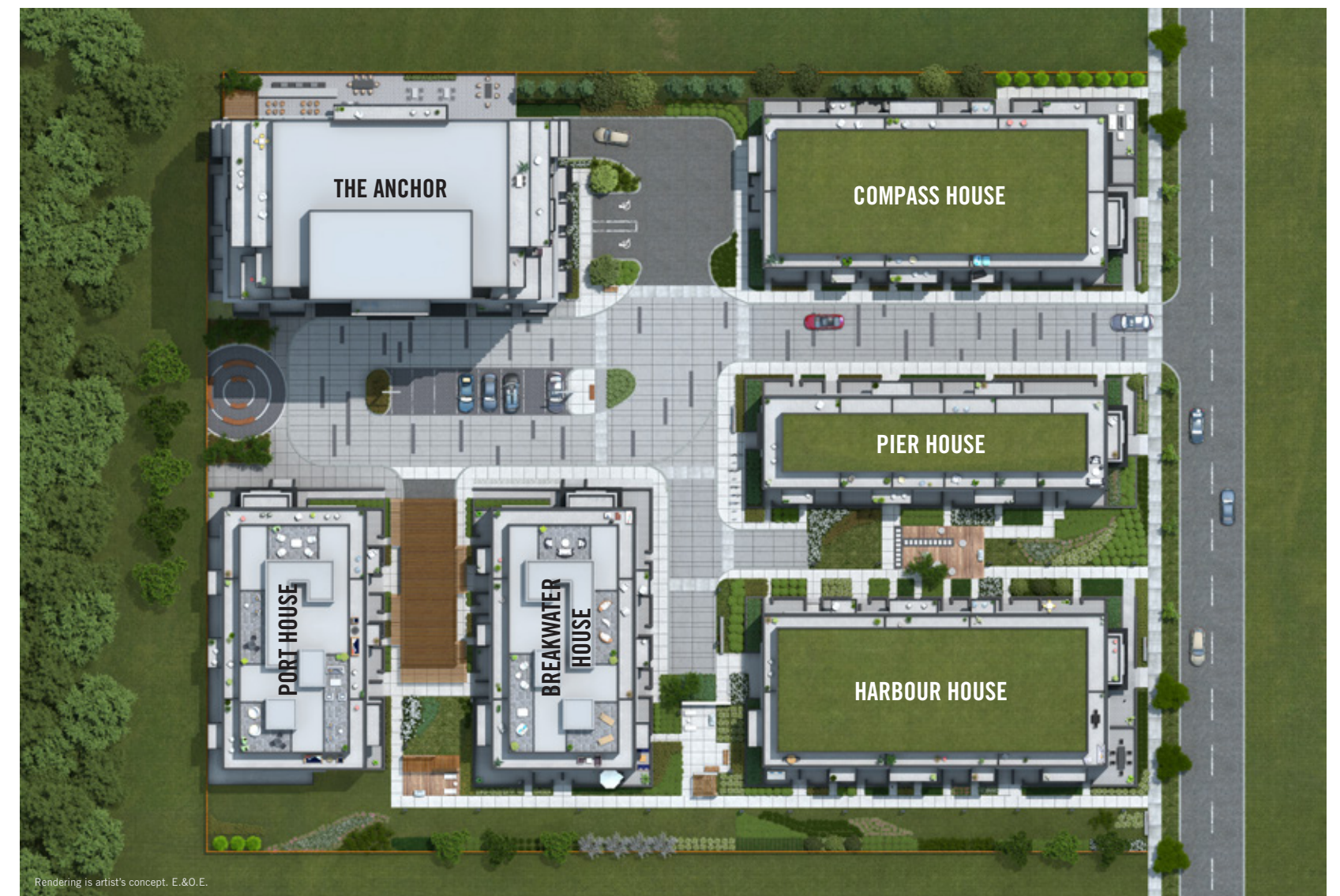
THE ANCHOR
The Landing's 18-storey tower, The Anchor, will be a waterfront beacon, gracing the Whitby skyline with its modern design.



THE LANDING IS A BEAUTIFULLY PLANNED COMMUNITY

Comprised of six contemporary and stylish buildings linked by shared central courtyards, The Landing connects to its outdoor spaces seamlessly.

Residents will enjoy patios and grassy spaces that encourage play and activity; where people can toss a ball or walk the dog or simply take in the natural surroundings. At The Landing it's all about connecting to the community, to the neighbourhood and to each other.



Rendering is artist's concept. E.&O.E.



CENTRAL COURTYARDS

Surrounded by lush landscaping, the shared courtyards at The Landing are a welcoming entrance to the community and ground floor suites.

Rendering and landscape is artist's concept. E.&O.E.

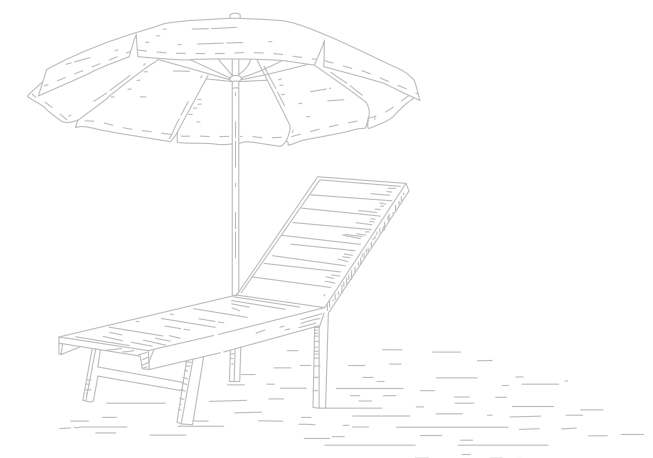


THE LOBBY
The Lobby at The Landing's 18-storey tower is a sophisticated entrance connecting residents and guests to the community's amenity spaces.



BUILDING AMENITIES THAT MAKE LIFE EXCITING.

The Landing's amenities are stylish and designed for pleasure. Enjoy the modern Lounge and Event Space for get-togethers or special occasions, connected to an outdoor Terrace for barbecuing, entertaining or simply curling up with a book. Work out in a bright, sun-filled, modern Fitness Centre or relax and tone in the separate Yoga Studio. The Landing also provides semiprivate workspace equipped with private single Zoom rooms and an open collaboration space, just off the Lobby. There's a convenient Dog Wash to handle the clean-up after a romp on the trails with the pup, as well as a Bike Wash/Repair space to keep your bike in tip-top shape.



ENJOY THE GREAT OUTDOORS
From a delightful Patio and Lounge area to plenty of outdoor green space, The Landing connects residents to beauty inside and out.



Rendering is artist's concept. E.&O.E.

ENTERTAIN IN YOUR OWN STYLE

The Landing's Lounge and Event Space is the perfect venue for entertaining indoors or out.



FITNESS CENTRE
Modern Gym with state-of-the-art cardio
equipment and Yoga/Pilates Studio.



Rendering is artist's concept. E.&O.E.

SPACIOUS MODERN LIVING

Elegantly crafted kitchens and baths custom designed, each suite has meticulous features and finishes like quartz kitchen countertops and porcelain backsplashes. Each suite has been designed to maximize the spacious layouts. Every detail at The Landing has been mindfully chosen for modern living. A home that is artfully and uniquely your own.



Rendering is artist's concept. E. & O. E.

THE ART OF THE VIEW

Open concept design offers the ultimate in easy living whether you're entertaining or simply enjoying the views.

Carttera has a 15 year history of creating award winning commercial, mixed-use, retail and residential condominium developments in the GTA and Montreal. The firm is currently developing over \$3.9 billion worth of projects, and is funded by major Canadian pension fund capital. Carttera believes in collaboration, professionalism and integrity, and has long term relationships with tenants, owners, lenders, industry professionals, and its institutional investors.

The firm has developed over 5,600 residential suites in the GTA and Montreal, including multi-award winning residential communities such as The Ninety, 75 The Esplanade, Sixty Colborne, Oneeleven Bathurst, Cloud 9 Condos, Sonic Condos, Valera (Burlington), L'Avenue (Montreal), Arbora (Montreal).

A proven track record, quiet achievements and integrity bear the cornerstones of Carttera's business.



THE NINETY



L'AVENUE



SIXTY COLBORNE



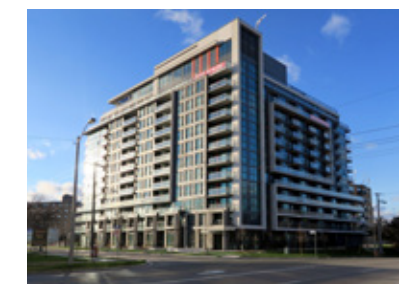
ARBORA



VALERA



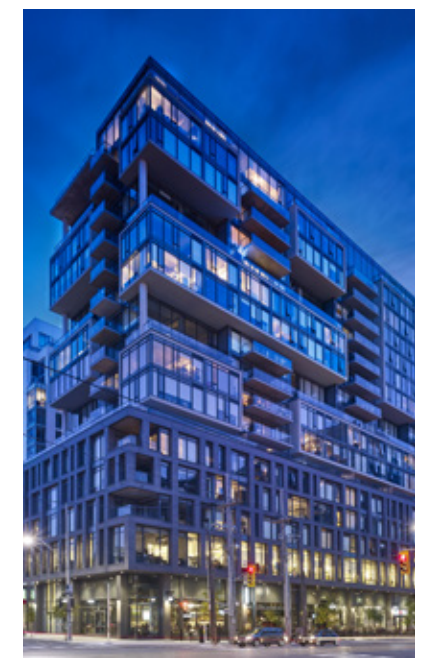
SONIC CONDOMINIUM



CLOUD 9



75 THE ESPLANADE



ONEELEVEN BATHURST

A SHARED VISION AND PASSION FOR THE LANDING



IBI Group is a global team of industry leading architects, engineers, planners, designers, and technology professionals united by a common desire: to create livable, sustainable, technologically advanced urban environments. They are a technology-driven design firm. From high-rises to industrial buildings, schools to state-of-the-art hospitals, transit stations to highways, airports to toll systems, bike lanes to parks, they design every aspect of truly integrated cities. IBI's collaborative approach focuses on future-forward solutions. They are bridging the gap between design and technology, unlocking new potential in data-driven environments.

IBI believes in cities built upon intelligent systems, sustainable buildings, efficient infrastructure, and the human touch.

FIGUR3

Figure3 is one of Canada's most distinguished interior design firms. Leveraging design-based research and brand strategy, Figure3 helps its clients realize environments which achieve the best connection between people and place. Independently-owned and based in Toronto with an entrepreneurial team of 60+ creative thought leaders in workplace, residential, hospitality and retail, Figure3 has established itself as a trusted partner for 25 years.



Milborne Group is the industry leader in the promotion and sale of new condominium projects. Their track record includes small boutique buildings up to large point towers, resort and recreational properties, hotel condominiums, freehold and stacked townhomes as well as large master planned communities. They have succeeded in all market conditions throughout the GTA and beyond. The first company to market a multi-phase project, Milborne Group has the greatest experience in large scale urban master planned, mixed use multi-phase communities.



